



LONG
BAR

*It is good to have an end
to journey toward;
but it is the journey
that matters, in the end.*

- Ernest Hemingway

Somerset Maugham once famously said.
"Raffles stands for all the fables
of the exotic East."

1887




S. S. MARGHA
KEEP THIS CARD
YOUR SLEEPING QUARTERS ARE IN SECTION 3
141
YOU EAT AT MESS No. 40

LONG BAR



RAFFLES HOTEL
THE HISTORIC HOTEL OF SINGAPORE

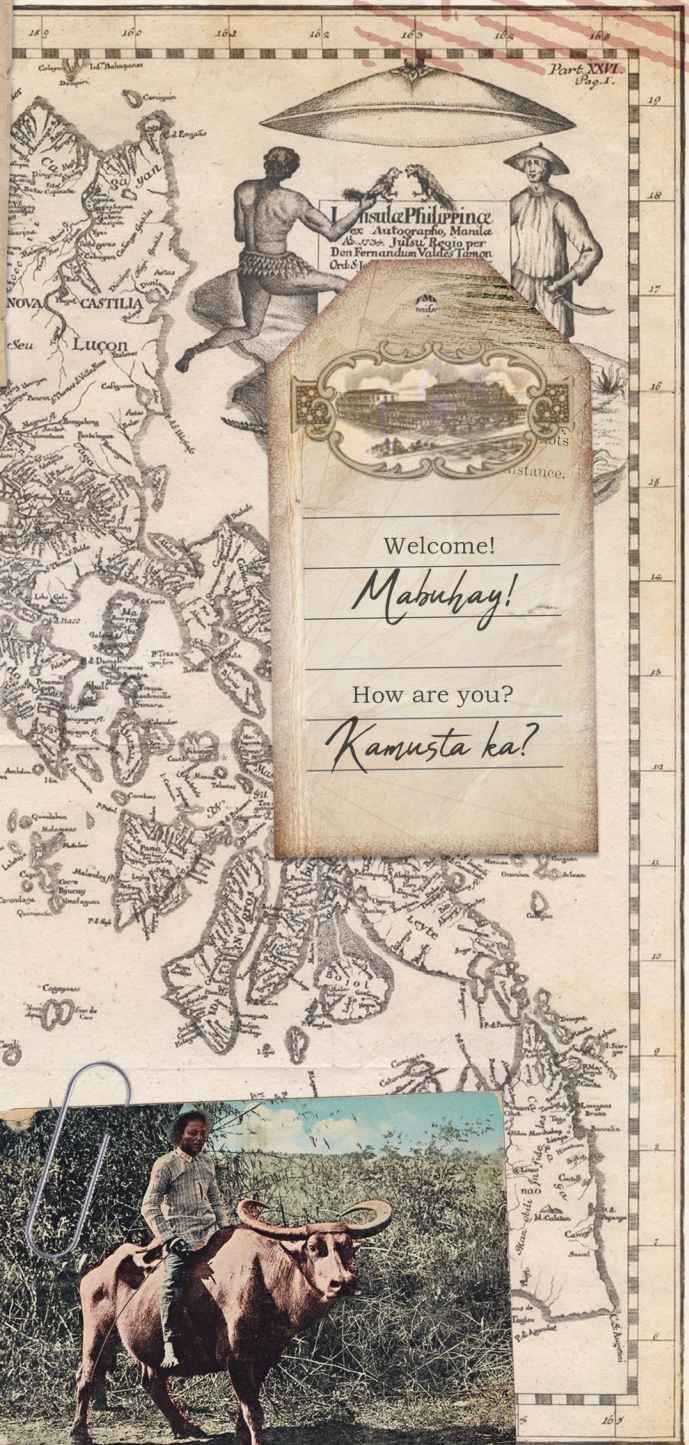


SINGAPORE

*Long Bar - home of the iconic Singapore Sling.
Where rubber and palm oil plantation owners from Malaya gather every weekend to ogle passers-by, it's often called "the Rendezvous of Planters."*

From Singapore
to Manila

I have finally set foot
on "The Pearl of the
Orient Seas!"



Culinary Journey



Savor Singapore Samplers



Trio of Chicharon



Chili Crab Spring Rolls



The chili crab spring rolls are a must-try. They remind me of the chili king crabs from home, with a twist.

Imagine biting through the rice-paper crispness of the spring roll wrapper then your mouth coming to rest on delicious savory crab inside.. this will be committed to my memory for years to come!



RAFFLES
HOTELS & RESORTS

STARTERS

SINGAPORE BAR SNACKS

CHICKEN SATAY (D)(N)(S) Peanut sauce and rojack salad	560
KAYA TOAST (D)(E) Poached eggs and roasted desiccated coconut	530
CHILI CRAB SPRING ROLLS (S)(E) Served with sweet and spicy dip	700
CHAR KWAY TEOW (S)(E)(P) Shrimp, chorizo, spring onions, and chili	690
SAVOR SINGAPORE SAMPLER (S)(N)(D)(E)(P) Chicken Satay, Chili Crab Spring Roll, Char Kway Teow, and Kaya Toast	1,770

(E) egg • (D) dairy • (S) seafood • (P) pork • (N) nuts • (V) vegetarian
(PB) plant-based • (GF) gluten-free • (L) local • (O) organic

Allow us to fulfill your needs - please let one of our staff know if you have any special dietary requirements, food allergies or food intolerances.

Raffles Makati is dedicated to sustainability through the implementation of environmentally friendly practices in our kitchen, restaurants and daily operations. We guarantee that over half of our menu ingredients are sustainably sourced, such as cage-free eggs, locally sourced fish, responsibly farmed seafood, and sustainable coffee and tea. Our commitment to sustainability includes prohibiting the use of endangered species and palm oil within the hotel premises.

All prices are in Philippine Pesos (PHP), inclusive of VAT and are subject to 10% service charge and local taxes.



The North's Pork Sisig

*The pork sisig.
Each delicious bite is a savory
and sour joy to the senses, made
palpable with the satisfying
crunch of the pork cracklings.*

*Paired this with a
perfectly chilled amber lager, and
I thought I'd died and gone to
heaven.*



RAFFLES
HOTELS & RESORTS

STARTERS

FILIPINO BAR SNACKS

THE LONG BAR CLASSIC 520
CHICHARON (P)(S)

Crispy fried pork crackling in our special rub, served with pinakurat coconut vinegar

BACOLOD CHICKEN INASAL 750
SKEWERS (S)(GF)(D)

Heirloom grain and salad

PALAWAN FISH CEVICHE (S)(N) 560

Burnt coconut cream, toasted cashew, and calamansi essence

THE NORTH'S PORK SISIG (P)(D)(E) 690

Poached egg, mountain red rice, and pork cracklings

TRIO OF CHICHARON (P)(E)(S) 1,280

A triple portion of crispy fried pork cracklings with Cajun spice, wasabi, and salted egg served with pinakurat coconut vinegar

(E) egg • (D) dairy • (S) seafood • (P) pork • (N) nuts • (V) vegetarian
(PB) plant-based • (GF) gluten-free • (L) local • (O) organic

Allow us to fulfill your needs – please let one of our staff know if you have any special dietary requirements, food allergies or food intolerances.

Raffles Makati is dedicated to sustainability through the implementation of environmentally friendly practices in our kitchen, restaurants and daily operations. We guarantee that over half of our menu ingredients are sustainably sourced, such as cage-free eggs, locally sourced fish, responsibly farmed seafood, and sustainable coffee and tea. Our commitment to sustainability includes prohibiting the use of endangered species and palm oil within the hotel premises.

All prices are in Philippine Pesos (PHP), inclusive of VAT and are subject to 10% service charge and local taxes.



STARTERS

SALADS

VEGAN COBB SALAD WITH AVOCADO AND TOFU (N) 650

Shredded Romaine lettuce, chickpeas, avocado, fresh cucumber, fresh tomato, seasonal vegetable and vinaigrette

CLASSIC CAESAR SALAD (P)(S)(D) (E) 700

Romaine lettuce, crispy pancetta, our own Caesar dressing, and garlic croutons

NIÇOISE SALAD (S)(E) 900

A true Niçoise salad with baby potatoes, quail eggs, onion, green beans and seared tuna loin in a light herb vinaigrette

GRILLED CHICKEN SALAD (D) 760

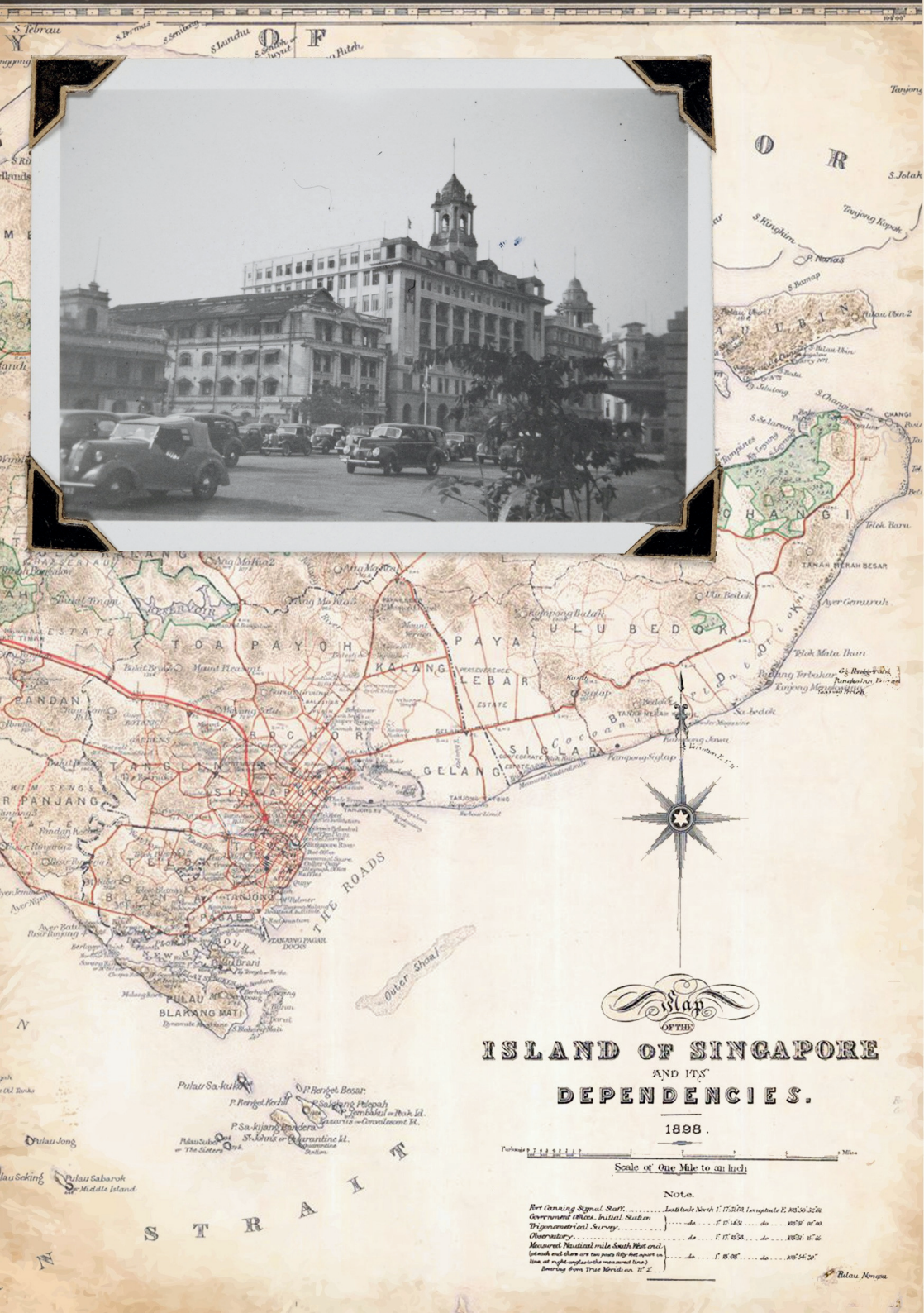
Mix green salad cucumber, roasted tomato, Kalamata olives, sundried tomato, and goat cheese

(E) egg • (D) dairy • (S) seafood • (P) pork • (N) nuts • (V) vegetarian
(PB) plant-based • (GF) gluten-free • (L) local • (O) organic

Allow us to fulfill your needs – please let one of our staff know if you have any special dietary requirements, food allergies or food intolerances.

Raffles Makati is dedicated to sustainability through the implementation of environmentally friendly practices in our kitchen, restaurants and daily operations. We guarantee that over half of our menu ingredients are sustainably sourced, such as cage-free eggs, locally sourced fish, responsibly farmed seafood, and sustainable coffee and tea. Our commitment to sustainability includes prohibiting the use of endangered species and palm oil within the hotel premises.

All prices are in Philippine Pesos (PHP), inclusive of VAT and are subject to 10% service charge and local taxes.



**ISLAND OF SINGAPORE
AND ITS
DEPENDENCIES.**

1898.

Scale of One Mile to an Inch

NOTE.

Red Cross Signal Staff	Latitude North 1° 15' 50" Longitude E. 103° 50' 32"
Government Office, Central Station do 1° 15' 50"
Triangulation Survey do 1° 15' 50"
Observatory do 1° 15' 50"
Measured distance mile South West end do 1° 15' 50"
Latitude and there are two points that report on do 1° 15' 50"
Time all right angles that measured time do 1° 15' 50"
Surveying from True Meridian 77° E.	

Pulau Nenas

STARTERS

SOUPS

CURRIED PUMPKIN SOUP (PB)(GF)	540
Coconut creamed pumpkin soup with roasted sesame tofu	
GRATINATED ONION SOUP (D)(V)	550
Traditional onion soup, served with a Gruyère toast	
LAKSA SOUP (S)(E)(D)(N)	850
Noodles, shrimp, fish balls, fried tofu, bok choy, fish cake, and bean sprouts	

(E) egg • (D) dairy • (S) seafood • (P) pork • (N) nuts • (V) vegetarian
(PB) plant-based • (GF) gluten-free • (L) local • (O) organic

Allow us to fulfill your needs – please let one of our staff know if you have any special dietary requirements, food allergies or food intolerances.

Raffles Makati is dedicated to sustainability through the implementation of environmentally friendly practices in our kitchen, restaurants and daily operations. We guarantee that over half of our menu ingredients are sustainably sourced, such as cage-free eggs, locally sourced fish, responsibly farmed seafood, and sustainable coffee and tea. Our commitment to sustainability includes prohibiting the use of endangered species and palm oil within the hotel premises.

All prices are in Philippine Pesos (PHP), inclusive of VAT and are subject to 10% service charge and local taxes.



A Filipino Country Store

STARTERS

SANDWICHES

All sandwiches are served with French fries and garden salad

STEAK, MUSHROOM & GUACAMOLE WRAP (D) 980

Grilled sirloin, caramelised onions, and blue cheese

THE GERMAN SANDWICH (P)(D)(E) 980

Three grilled Nuremberg style sausages with cabbage salad and mustard in a Kaiser roll

THE LONG BAR BURGER (P)(S)(D)(E) 1,650

Grilled beef tenderloin with comté cheese, pickled gherkins, crispy bacon, and Caesar dressing

THE LOBSTER CLUB (S)(D)(E)(P) 2,200

Classic club with lobster chunks, tossed in shrimp bisque mayonnaise

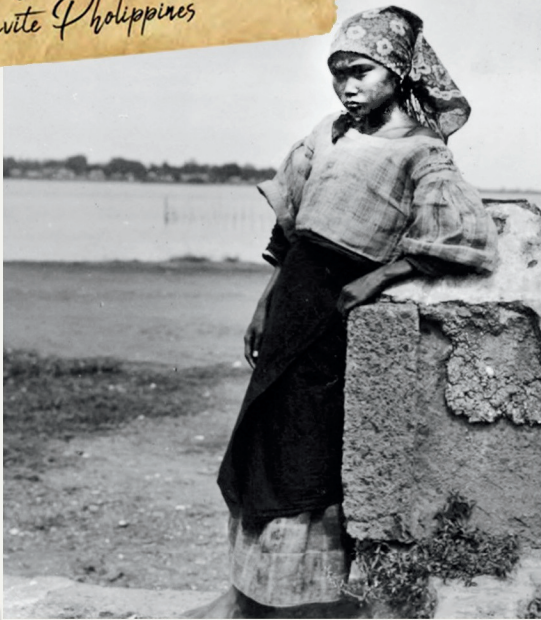
(E) egg • (D) dairy • (S) seafood • (P) pork • (N) nuts • (V) vegetarian
(PB) plant-based • (GF) gluten-free • (L) local • (O) organic

Allow us to fulfill your needs – please let one of our staff know if you have any special dietary requirements, food allergies or food intolerances.

Raffles Makati is dedicated to sustainability through the implementation of environmentally friendly practices in our kitchen, restaurants and daily operations. We guarantee that over half of our menu ingredients are sustainably sourced, such as cage-free eggs, locally sourced fish, responsibly farmed seafood, and sustainable coffee and tea. Our commitment to sustainability includes prohibiting the use of endangered species and palm oil within the hotel premises.

All prices are in Philippine Pesos (PHP), inclusive of VAT and are subject to 10% service charge and local taxes.

*A Young Fishermaid
in Cavite Philippines*



*Filipino children enjoying
the cool water below*

STARTERS

SNACKS

FRESH VEGAN SPRING ROLLS (N) 520
(PB)(GF)

Crispy vegetables and fresh herbs in rice paper with peanut sauce

CHARGRILLED CHORIZO SAUSAGE 560
(P)(N)

Spiced sausage in bao buns with tomato salsa

CHICKEN TIKKA BITES (D)(N) 690

Tandoor spiced chicken bites with chili chutney and poppadoms

BAKED BRIE WITH CRANBERRY SAUCE (D)(E) 610

Panko crumbed brie cheese, golden brown bake with cranberry jelly

(E) egg • (D) dairy • (S) seafood • (P) pork • (N) nuts • (V) vegetarian
(PB) plant-based • (GF) gluten-free • (L) local • (O) organic

Allow us to fulfill your needs – please let one of our staff know if you have any special dietary requirements, food allergies or food intolerances.

Raffles Makati is dedicated to sustainability through the implementation of environmentally friendly practices in our kitchen, restaurants and daily operations. We guarantee that over half of our menu ingredients are sustainably sourced, such as cage-free eggs, locally sourced fish, responsibly farmed seafood, and sustainable coffee and tea. Our commitment to sustainability includes prohibiting the use of endangered species and palm oil within the hotel premises.

All prices are in Philippine Pesos (PHP), inclusive of VAT and are subject to 10% service charge and local taxes.



Young men attempt to woo their lady-loves by serenading them from beneath their windows in what the Filipinos call "harana"

MAINS

FRIED NOODLES (P)(S)(E) 950

Stir-fried egg noodles, carrots, snow peas, bean sprouts, oyster sauce, pork, chicken, and shrimp

PIZZA MARGHERITA (V)(D) 980

Tomatoes, buffalo mozzarella, and basil

PIZZA PEPPERONI(P)(D) 1,300

Pepperoni salami, tomato, and mozzarella

DESSERTS

NYC-STYLE CHEESECAKE (D(N)(E) 600

Served with berries compote

VEGAN COCONUT CHOCOLATE MOUSSE (PB) 600

LEMON TART (D)(N)(E) 570

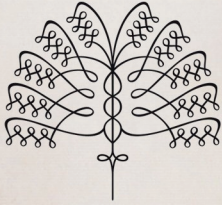
Deconstructed lemon tart, meringue, and marshmallow

(E) egg • (D) dairy • (S) seafood • (P) pork • (N) nuts • (V) vegetarian
(PB) plant-based • (GF) gluten-free • (L) local • (O) organic

Allow us to fulfill your needs – please let one of our staff know if you have any special dietary requirements, food allergies or food intolerances.

Raffles Makati is dedicated to sustainability through the implementation of environmentally friendly practices in our kitchen, restaurants and daily operations. We guarantee that over half of our menu ingredients are sustainably sourced, such as cage-free eggs, locally sourced fish, responsibly farmed seafood, and sustainable coffee and tea. Our commitment to sustainability includes prohibiting the use of endangered species and palm oil within the hotel premises.

All prices are in Philippine Pesos (PHP), inclusive of VAT and are subject to 10% service charge and local taxes.



RAFFLES

HOTELS & RESORTS



*Legend has it that the
traveller's Palm quenched the thirst
of many a weary traveller with water
stored in the base of its leaves.
And with these same leaves oriented
in an East-West direction, they were
guided on their journey.*



Batan Islands

LEGEND

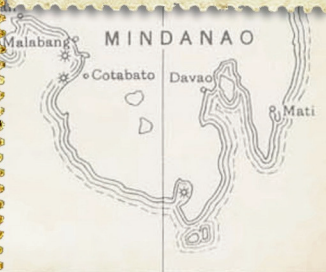
ron Coal

ected



The Raffles Journey

C
H
I
A



Chocolate Hills, Bohol

B O



*A custom Sling Shaker,
mixing to perfection.*

RAFFLES HOTEL, LIMITED.

(INCORPORATED IN THE STRAITS SETTLEMENTS.)

THE HISTORIC HOTEL OF SINGAPORE.

PROPRIETORS OF
RAFFLES HOTEL, RAFFLES CAFE,
RAFFLES HOTEL GARAGE,
SINGAPORE.

EASTERN & ORIENTAL HOTEL,
EASTERN & ORIENTAL HOTEL ANNEX,
EASTERN & ORIENTAL MOTOR GARAGE,
PENANG.

TELEGRAPHIC ADDRESS:
"RAFFLES" SINGAPORE.

CODES:
A. 1.-A. B. C. 5TH EDITION,
WESTERN UNION
AND BENTLEY'S.

TELEPHONE NO. 5381.
(5 LINES.)

Singapore, April 4, 1936

Singapore Gin Sling.

*By
The bartender of the Raffles Hotel Bar*

*1/2 Sherry glass of Gin
1/2 Liqueur glass Cherry Brandy
5 drops of each { ^{Born} Maraschino
 Curacao
Sugar and lemon to taste
few pieces of ice
3 or 4 drops of Angostura and
Orange bitters.*



The Original Singapore Sling

Long Bar's iconic Signature Sling was first created in 1915 at Raffles Singapore by Hainanese bartender Ngiam Tong Boon. Back then, while it was not unusual for women to go to bars, etiquette dictated that they could not consume alcohol in public. They instead made do with teas and fruit juices. Seizing an opportunity, Ngiam Tong Boon created a gin-based cocktail, adding grenadine and cherry liqueur to give it a rosy pink hue, so that it just looked like fruit punch. With that, the Singapore Sling was born.





The Makati Luxury Sling

A must-try cocktail and the local version of the iconic Sling, the Makati Luxury Sling is a blend of bitter and sweet flavors, with a refreshing finish.

Ingredients include Tanqueray, cherry blossom, Grand Marnier Benedictine, fresh lime juice, fresh pineapple juice, Angostura foam, and - the pièce de résistance - flecks of 24-karat gold leaf topping it off

*Hotel Le Royal Monceau
- Raffles Paris*

Raffles Dubai

*Raffles Hotel
Phnom Penh*

Raffles Manila

*Hotel Raffles
Seychelles*

Raffles Singapore

*Hotel Raffles Maldives
Meradhoo Resort Spa*

THE RAFFLES JOURNEY

EXPERIENCE RAFFLES IN A GLASS

Let these signature Raffles slings take you on a flavour trip around the world and back again.

RAFFLES SINGAPORE SLING 🍹 600

Gin, Bénédictine, Cherry Heering, Ferrand Dry Curaçao, homemade grenadine, fresh pineapple juice, fresh lime juice, and Angostura Bitters

MAKATI LUXURY SLING 600

Tanqueray 10, cherry blossom, fresh lime juice, Grand Marnier Benedictine, fresh pineapple juice, Angostura foam, and 24k gold leaf

PHNOM PENH SLING 🍹 600

Gin, lychee liqueur, Cointreau, Dom Bénédictine, and pink guava

PRASLIN SLING (D) 600

Gin, fresh milk, coconut syrup, and vanilla syrup

DUBAI SLING (D) 600

Gin, lemon juice, fig jam, ginger, chili, coriander syrup, soda water, and Angostura Bitters

MALDIVES SLING (D) 600

Gin, Cherry Heering, pineapple juice, island coconut banana syrup, star anise, watermelon juice, cinnamon, and Angostura Bitters

PARIS SLING (D) 600

Vodka, cucumber syrup, apple juice, mint leaves, lemongrass, and ginger ale

(D) dairy • (L) local

Allow us to fulfill your needs – please let one of our staff know if you have any special dietary requirements, food allergies or food intolerances.

Long Bar Concoctions (also available for takeaway) 🍹

All items are subject to availability.

All prices are in Philippine Pesos (PHP), inclusive of VAT and are subject to 10% service charge and local taxes.



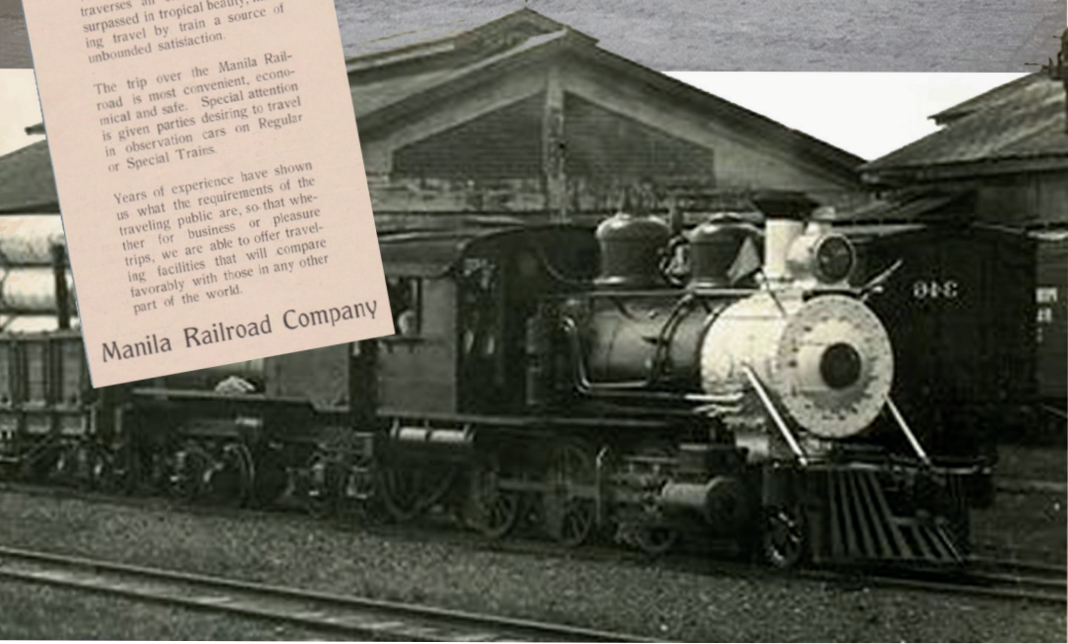
SEE THE PHILIPPINES BY RAILROAD

The Manila Railroad system traverses an extensive area unsurpassed in tropical beauty, making travel by train a source of unbounded satisfaction.

The trip over the Manila Railroad is most convenient, economical and safe. Special attention is given parties desiring to travel in observation cars on Regular or Special Trains.

Years of experience have shown us what the requirements of the traveling public are, so that whether for business or pleasure, we are able to offer travel facilities that will compare favorably with those in any other part of the world.

Manila Railroad Company

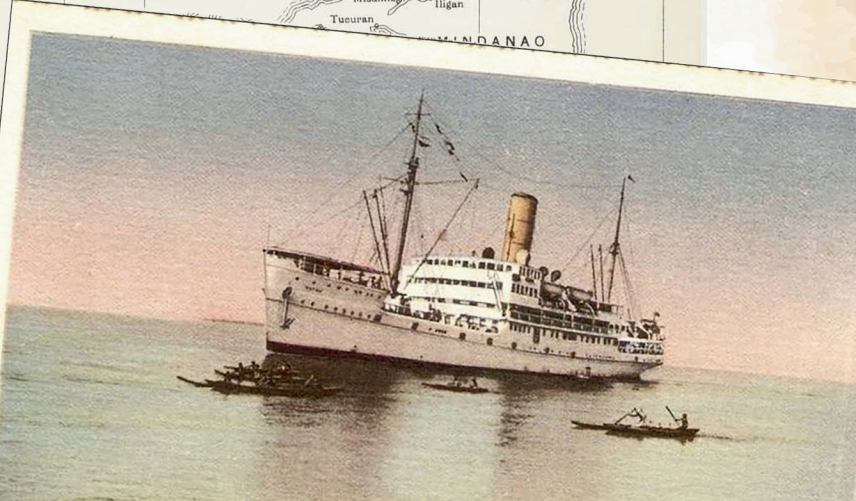




125°
PHILIPPINE ISLANDS
MAP SHOWING
PRINCIPAL MINERAL DISTRICTS

An Exploration of Regions

Cagayan Valley





Baguio

Calabarzon

Batangas

Bicol

AN EXPLORATION OF REGIONS

A CROSS-COUNTRY VOYAGE



LITTLE BAGUIO (L)

(Baguio) 620

Volcan Blanco tequila, lime juice, elderflower cordial, sugar syrup, and fresh strawberry

MORINGA BLAST (L)

(Calabarzon) 620

Belvedere vodka, lime juice, St-Germain Elderflower liqueur, cucumber and malunggay juice, malunggay syrup, and egg white



MANZANILLA BLOSSOM

(Batangas) 620

Glenmorangie X whisky, Oloroso Sherry, lemon juice, manzanilla syrup, and egg white

KAHEL DE BICOLANDIA


(Batangas) 620

Belvedere vodka, lime juice, dalandan juice, sugar syrup, fresh basil, and chili



(D) dairy • (L) local

Allow us to fulfill your needs – please let one of our staff know if you have any special dietary requirements, food allergies or food intolerances.

Long Bar Concoctions (also available for takeaway) 

All items are subject to availability.

All prices are in Philippine Pesos (PHP), inclusive of VAT and are subject to 10% service charge and local taxes.



Mindoro



Zamboanga



Davao Del Norte

AN EXPLORATION OF REGIONS

A CROSS-COUNTRY VOYAGE



PURPLE YAM (L)

(Mindoro) 620

Volcan Blanco tequila,
ube liqueur, lime juice,
and agave nectar

CHAVACANO SOUR (L)

(Zamboanga) 620

Hennessy VS, pickled spicy green mango
(buro), lemon juice, Cointreau, simple syrup,
and egg white



BANANA DEL NORTE (L)

(Davao del Norte) 620

Glenmorangie X Whisky,
Ardbeg Wee Beastie Whisky,
Giffard Banana du Bresil liqueur,
and Flor de Caña Spresso liqueur

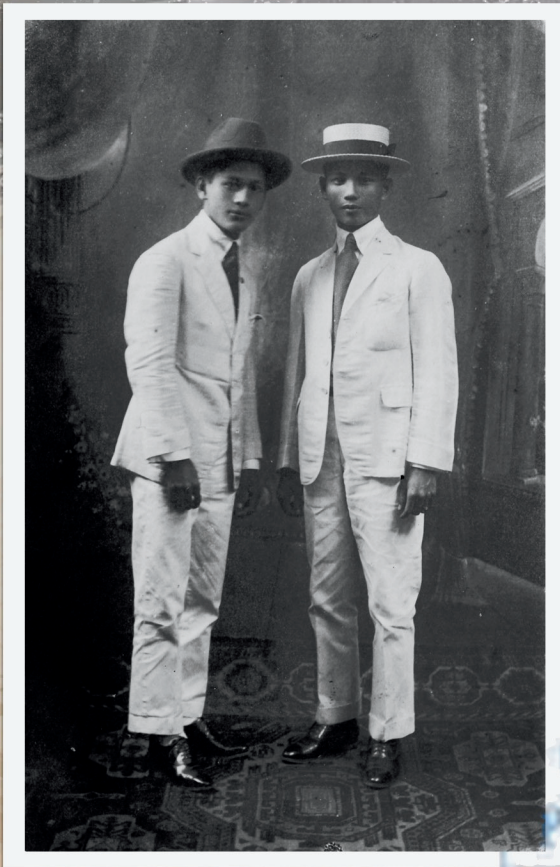
(D) dairy • (L) local

Allow us to fulfill your needs – please let one of our staff know if you have any special dietary requirements, food allergies or food intolerances.

Long Bar Concoctions (also available for takeaway) 🍹

All items are subject to availability.

All prices are in Philippine Pesos (PHP), inclusive of VAT and are subject to 10% service charge and local taxes.





The Classics



Certificado



Craft Gin & Tonic



"Thirst is the end of drinking and
sorrow is the end of drunkenness."

Manhattan



THE CLASSICS

Timeless standards favoured all over the world for their exquisite balance of flavours, rich history and tradition.

CRAFT GIN & TONIC	450
Gin, craft tonic water, fragrant leaf, grapefruit peel, lime, and juniper berries	
MOSCOW MULE	670
vodka, fresh lim, and ginger beer	
MANHATTAN 🍸	670
Bourbon, Sweet Vermouth, and bitters	
NEGRONI 🍸	500
Gin, Campari, and Sweet Vermouth	
MARGARITA 🍸	500
Tequila, Cointreau, and fresh lime	
SIDECAR 🍸	810
Cognac, Cointreau, and fresh lemon	

(D) dairy • (L) local

Allow us to fulfill your needs – please let one of our staff know if you have any special dietary requirements, food allergies or food intolerances.

Long Bar Concoctions (also available for takeaway) 🍸

All items are subject to availability.

All prices are in Philippine Pesos (PHP), inclusive of VAT and are subject to 10% service charge and local taxes.







*Every second in the world
there is a bottle of Moët being opened.*

Located in the northeast of France, the Champagne region is home of the most prestigious sparkling wine in the world.

The diversity of its terroir offers unique conditions to grow the three iconic grape varieties that we can find in the traditional Champagne blend:

Chardonnay, Pinot Noir and Pinot Meunier.

To protect its heritage, the Champagne region and its production has been regulated by a specific "Appellation d'Origine Contrôlée" (AOC) since 1936.



Above: The Mont Aigu vineyard in Champagne, which is part of Moët & Chandon estate. Moët & Chandon is the largest estate in Champagne with 50% grand cru and 25% premier cru reflecting its exceptional terroir.

Time cannot be hurried in champagne.

If the great personalities of Moët & Chandon shared one common trait throughout the 279 years of the House's history, it is an inherent consciousness of time.

That permanent sense of time is in some ways intrinsic to Champagne, an agricultural heartland where nature dictates its own time. Here, time moves at the rhythm of the seasons. Time in Champagne cannot be hurried.

There is a time to plant, a time to ripen, and a time to harvest. When it is set to rest in the cellars, the wine needs time to mature. It is nature that sets the tempo on the vineyards, and for those who work this land and depend on its natural bounty, time in Champagne commands respect.



Moët & Chandon Imperial Brut offers a bright fruitiness, seductive palate and an elegant maturity. Enjoy it at Long Bar.



Dom Pérignon Brut

WINE TYPE: CHAMPAGNE
VARIETY: PINOT NOIR, CHARDONNAY
COUNTRY: FRANCE
REGION: CHAMPAGNE
ABV : 12.5%

*Elegant clarity
with perfect equilibrium.*

CHAMPAGNE

MOËT & CHANDON BRUT IMPÉRIAL 1,700 | 8,200
Chardonnay, Pinot Noir, Pinot Meunier

MOËT & CHANDON ROSÉ IMPÉRIAL 10,500
Chardonnay, Pinot Noir, Pinot Meunier

MOËT & CHANDON ICE IMPÉRIAL 10,500
Chardonnay, Pinot Noir, Pinot Meunier

DOM PÉRIGNON BRUT 36,000
Chardonnay, Pinot Noir

KRUG GRANDE CUVÉE 38,000
Pinot Noir, Chardonnay, Pinot Meunier

DOM PÉRIGNON ROSÉ 62,000
Chardonnay, Pinot Noir

Allow us to fulfill your needs – please let one of our staff know if you have any special dietary requirements, food allergies or food intolerances.

All items are subject to availability.

All prices are in Philippine Pesos (PHP), inclusive of VAT and are subject to 10% service charge and local taxes.



Whispering Angel

WINE TYPE: ROSÉ
VARIETY: GRENACHE, CINSULT, VERMENTINO
COUNTRY: FRANCE
REGION: PROVENCE-COTES DE PROVENCE
ABV: 13%

This has aromas of lavender, rosehip, strawberries, cherries and cloves. Medium-bodied with a crisp acidity and a subtle, creamy palette. Very pure, round and flavorful

SPARKLING

CHANDON BRUT

650 | 3,000

MENDOZA, ARGENTINA

Chardonnay, Pinot Noir, Pinot Meunier

RAVENTÓS I BLANC DE NIT

3,800

SANT SADURNI D'ANOIA, SPAIN

Macabeo, Xarel-lo, Parellada, Monastrell

ROSÉ

CAMILLE DE LABRIE ROSÉ

550 | 2,600

BORDEAUX, FRANCE

Grenache, Cinsault, Merlot, Marselan

CHÂTEAU D'ESCLANS WHISPERING ANGEL

850 | 4,000

CÔTES DE PROVENCE, FRANCE

Grenache, Rolle, Cinsault, Syrah, Mourverde

Allow us to fulfill your needs - please let one of our staff know if you have any special dietary requirements, food allergies or food intolerances.

All items are subject to availability.

All prices are in Philippine Pesos (PHP), inclusive of VAT and are subject to 10% service charge and local taxes.

pale yellow-green
silver glow



[light-bodied]

rich yellow-ochre
copper glow



[full-bodied]

dull color
faded
yellow to brown



old wine

pale gold
platinum glow



[medium-bodied]

saturated color
bright glow
yellow to green



[young wine]

wide watery rim
transparent



[light-bodied]

compact rim with
opaque



[full-bodied]

dull color
transparent
re-brange



old wine

medium, rich with
semi-transparent
opaque core



[medium-bodied]

rich color
violet-red



[young wine]

WHITE

SUSANA BALBO CRIOS	600 2,800
MENDOZA, ARGENTINA <i>Torrontés</i>	
BORG SAN LEO DOC	600 2,800
VENETO, ITALY <i>Pinot Grigio</i>	
CLEAN SLATE	700 3,300
MOSEL VALLEY, GERMANY <i>Riesling</i>	
TERRAZAS DE LOS ANDES RESERVA	770 3,600
MENDOZA, ARGENTINA <i>Chardonnay</i>	
CLOUDY BAY	1,100 5,200
MARLBOROUGH, NEW ZEALAND <i>Sauvignon Blanc</i>	

RED

TERRAZAS DE LOS ANDES	760 3,600
MENDOZA, ARGENTINA <i>Malbec</i>	
JIM BARRY THE LODGE HILL	800 3,800
CLARE VALLEY, AUSTRALIA <i>Shiraz</i>	
LAS HUERTAS	800 3,800
CENTRAL VALLEY, CHILE <i>Cabernet Sauvignon</i>	
CLARENDELLE BY HAUT-BRION ROUGE	870 4,150
BORDEAUX, FRANCE <i>Merlot, Cabernet Sauvignon, Cabernet Franc</i>	
CLOUDY BAY	1,900 8,500
MARLBOROUGH, NEW ZEALAND <i>Pinot Noir</i>	

Allow us to fulfill your needs – please let one of our staff know if you have any special dietary requirements, food allergies or food intolerances.

All items are subject to availability.

All prices are in Philippine Pesos (PHP), inclusive of VAT and are subject to 10% service charge and local taxes.



m Rain
m Condor



Dressed up, cleaned
clothes & made for
7 miles, about to
walk. Received
tickets, mail etc. he
from Post dated July
Walked back to Cleas
Eleonore had from office
of flight —
Had breakfast & went
looking for C. P. R. office
found & received logs &
up



Spirits



PATRONISED BY ROYALTY AND NOBILITY

THE LARGEST AND BEST APPOINTED HOTEL IN THE STRAITS. — FACING THE HARBOUR.

RENOWNED FOR ITS MODERN COMFORTS


Lit throughout by Electricity. — Electric Fans in Bedrooms and Public Rooms.

GRAND MARBLE DINING ROOM CAPABLE OF SEATING 500 GUESTS. — PRIVATE DINING ROOMS FOR PARTIES. — EXCELLENT CUISINE. — FRENCH CHEFS

STEAMERS MET BY HOTEL PORTERS. — ELECTRIC BELLS THROUGHOUT THE HOTEL.

To avoid being disappointed, visitors should write or telegraph for rooms in advance.

1799 - Loading barrels of Hennessy
Cognac to be shipped to the USA.
Today Hennessy Cognac is distributed
in over 160 countries.



Cognac is the most prestigious spirit from France. It is a blend of distilled wines called "eaux-de-vie" which are selected for their unique tasting profile.

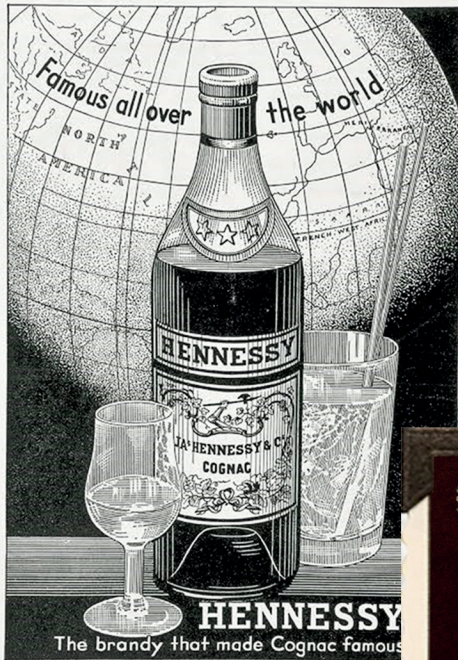
The art of assembling complementary eaux-de-vie, reflecting diversities of vintages, plots and ageing conditions, is crucial to compose a Cognac featuring consistency, balance and complexity.

Every year, the Hennessy Tasting Committee samples over 10,000 eaux-de-vie in order to evaluate their future potential, survey their maturation and bring them up to their fullest potential, to finally compose the final assemblages which must be aged in new French oak barrels.

In 1765, Richard Hennessy founded a trading house that his descendants have continued to shape, over eight generations.

Over a century later, in 1870, Maurice Hennessy requested from his master blender, Emile Fillioux, a great "assemblage" that his friends and family would enjoy in private moments. Emile Fillioux decided to craft a rich, powerful, intense and robust blend.

This new creation was instantly and unanimously recognized by the audience. Maurice Hennessy logically decided that the whole World would need to discover this new blend, and asked Emile Fillioux to commercially launch this new reference.



*Hennessy created the first classification for Cognac with *** 3 Stars for their young aged blend in the late 1800's. This blend is now called Hennessy Very Special Cognac*

*Hennessy X.O. Cognac.
Enjoy it at Long Bar.*

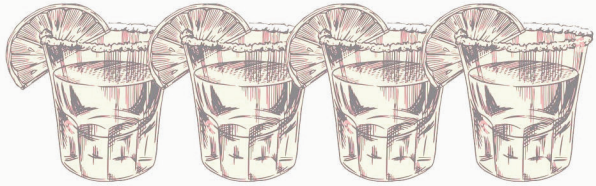


For this new assemblage, Emile Fillioux used a blend of Extra Old eaux-de-vie creating at the same time a name that became an appellation even beyond the cognac category. Hennessy X.O. was born.

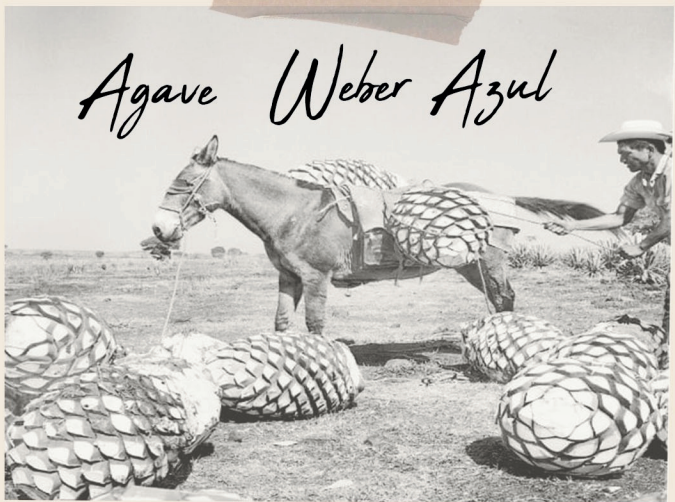


LUDOUICUS XIII. D. G.
Francia et Navarra Rex Christianissimus.

King Louis XIII



Agave Weber Azul



TEQUILA

Olmeca Reposado	350
Casa Noble Organic	
Crystal Blanco	700
Reposado	700
Añejo	750
Patron Silver	700
Reposado	700
Añejo	750
1800 Silver	400
Reposado	400
Añejo	450
Ocho Reposado	550
Don Julio 1942	3,950
Clase Azul Reposado	3,950
Patron XO Coffee	400
Volcan Blanco	500
Extra Añejo	3,850

COGNAC

Martell	
VSOP	600
XO	1,850
Hennessy	
VS	450
VSOP	600
XO	1,600
Paradis	4,200
Remy Martin	
VSOP	650
XO	1,750
Louis XIII	20,000
H by Hine VSOP	550
Hine Rare VSOP	750

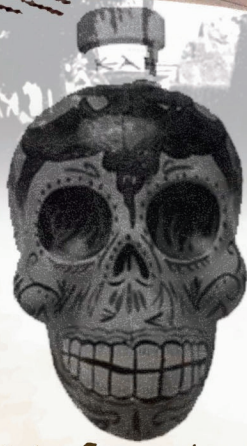
MEZCAL

Derrumbes Durango	650
Oaxaca	700

Allow us to fulfill your needs - please let one of our staff know if you have any special dietary requirements, food allergies or food intolerances.

All items are subject to availability.

All prices are in Philippine Pesos (PHP), inclusive of VAT and are subject to 10% service charge and local taxes.



Kah Crystal Head

VODKA

Absolut	350
Haku	400
Belvedere	450
Ciroc	600
Ketel One	380
Smirnoff	350
Grey Goose	450
Chopin	600
Tito's	400
Stolichnaya	380
42 Below	350
Crop Organica Artisanal	650
Chase	600
Kah Crystal Head	1,200

RUM

Havana Club 3-Años	350
Mt. Gay Silver	440
Myers's Dark Rum	400
Bacardi Superior	350
Don Papa 7 years	420
Bacardi 8 years	400
Cachaca 51	350
Captain Morgan	380
Diplomatico Reserva Exclusiva	480
Diplomatico Mantuano	430
Diplomatico Planas	430
Diplomatico Ambassador Selection	1,800
Novo Fogo Silver Cachaca	450
Novo Fogo Barrel Aged Cachaca	450
Bye Dutch Batavia Arrack	500
Plantation Original Dark	350
Plantation 2 Stars	380
Plantation Jamaica Single Vintage 2002	600
Plantation Barbados 5 Years	450
Appleton	400

Allow us to fulfill your needs - please let one of our staff know if you have any special dietary requirements, food allergies or food intolerances.

All items are subject to availability.

All prices are in Philippine Pesos (PHP), inclusive of VAT and are subject to 10% service charge and local taxes.



*Monkey 47
Schwarzwald Dry Gin*



GIN

Sipsmith 1915	550
Citadelle	400
Tanqueray No. 10	500
Tanqueray	400
Bombay Sapphire	400
Hendrick's	500
Roku	550
Monkey 47	680
Botanist	550
Four Pillars	
Navy Strength	500
Rare Dry	500
Iron Balls	650
Brocksman	600
Classic Dry 28 St.	600
St. Laurent Premium Dry	500
Farmer's Organic	700
Martin Miller's	
Original	500
Westbourne Strength	550
Del Professore Madame	700
Opihr Oriental Spiced	550
Sipsmith SLOE	600
Plymouth	550

Allow us to fulfill your needs - please let one of our staff know if you have any special dietary requirements, food allergies or food intolerances.

All items are subject to availability.

All prices are in Philippine Pesos (PHP), inclusive of VAT and are subject to 10% service charge and local taxes.

VISITORS MAP TO SINGLE MALT WHISKY DISTILLERIES IN SCOTLAND

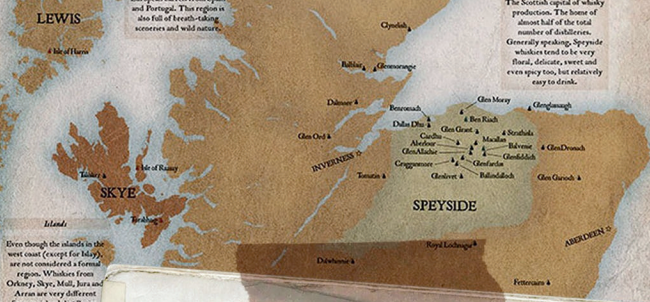
More than 700 working distilleries can be found across Scotland. The following map is a selection of some of the best malt whisky distilleries that worth a visit and a shor.

ORKNEY
ISLANDS



Highland
The largest of the regions and most varied in terms of taste. Whiskies from this region are very rich and full-bodied due to the increasing trend of using European barrels from Spain and Portugal. This region is also full of breath-taking scenery and wild nature.

Speyside
The Scottish capital of whisky production. The home of almost half of the total number of distilleries. Generally speaking, Speyside whiskies tend to be very floral, delicate, sweet and even spicy too, but relatively easy to drink.



Islands
Even though the islands in the west coast (except for Islay) are not considered a formal region, Whiskies from Orkney, Shyre, Mull, Jura and Arran are very different from mainland distilleries. Usually, these whiskies are very rich, coastal and volcanic.

Map
Predominantly smoky, this particular flavour comes from the peat that is burned in kilns to dry the malted barley. This creates a very pungent and powerful whisky. At first, they can be difficult to understand, nonetheless, they can be surprisingly interesting.

WHISKY TASTING NOTES

Whisky: **MACALLAN 18YRS**
Country: **SCOTLAND**
Region: **SPEYSIDE**
Type: **SINGLE MALT**
Strength: **43%**



Color: *Deep caramel brown.*

Nose: *Sherry sweetness and spice, crème brûlée*

Palate: *The sherried sweetness and some spice carry over from the nose.*

The whisky is big and creamy. A delicate, charred smokiness permeates the dram. More like a wood smoke than the coal smoke of Islay whiskies.

Overall: *The big, creamy taste that the Macallan is famous for, with an added layer of complexity from the delicate charred smokiness.*

SINGLE MALT

Glenlivet 12 years	650
The Glenlivet Archive 21 years	1,650
The Glenlivet 15 years	750
Glenmorangie	
Original	700
Lasanta	650
Quinta Ruban	650
Nectar D'or	700
Signet	1,950
Ardberg 10	900
Ardberg Uigeadail	950
Ardberg Corryvreckan	1,150
Oban 14 years	850
Dalmore 12 years	700
Dalmore 15 years	1,200
Glenfiddich 12 years	600
Talisker 10	780
Jura Superstition	780
Laphroaig 10 years	600
Macallan 12 years Single Malt	
Double Cask	1,100
Macallan 15 years Single Malt	
Double Cask	1,350
Macallan 18 years	5,500
Lagavulin 16 years	980

Allow us to fulfill your needs - please let one of our staff know if you have any special dietary requirements, food allergies or food intolerances.

All items are subject to availability.

All prices are in Philippine Pesos (PHP), inclusive of VAT and are subject to 10% service charge and local taxes.

WHISKY TASTING NOTES

Whisky: **SUNTORY HIBIKI:
JAPANESE WHISKY**

Country: **JAPAN**

Type: **BLEND OF SINGLE MALT AND
SINGLE GRAIN WHISKIES**

Strength: **43%**

Color: *Pale gold*

Nose: *Red berries, green apple
and layers of rich honey.*

Palate : *Melted butter and caramelized dates.
A hint of fragrant sandalwood develops
into warming oak-y spice.*

Finish: *Brown sugar, citrus peels,
white grape and black pepper. Honey.*

HIBIKI
SUNTORY WHISKY

響



BLENDED WHISKY

Ballantine's Finest	400
Johnnie Walker	
Black	400
Double Black	600
Gold	600
Blue	1,400
Chivas	
12 years	400
18 years	600
Monkey Shoulder	600

CANADIAN WHISKY

Canadian Club	400
Crown Royal	400

IRISH WHISKEY

Jameson	400
Bushmills	400

AMERICAN WHISKEY

Wild Turkey 8 Years	450
Maker's Mark	450
Knob Creek	550
Jim Beam	400
Koval Rye	680
Rittenhouse Rye	480
Jack Daniel's	450
Gentleman's Jack	600
Woodford Reserve	820
Mitcher's US*1 Kentucky Straight Rye	780

JAPANESE WHISKY

Suntory Hibiki	1,350
Suntory Kakubin	450
Suntory Hakushu	1,200
Mars Maltage Cosmo	1,100
Yellow Stone Select	700
Minor Case Rye	700
Ezra Brooks Straight Rye	600

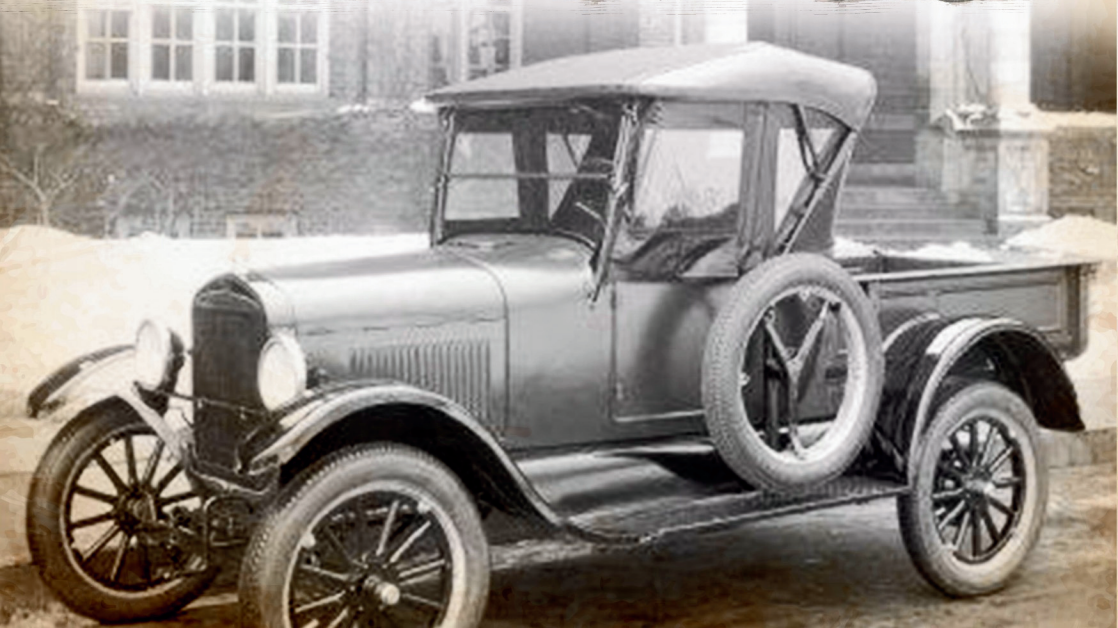
Allow us to fulfill your needs - please let one of our staff know if you have any special dietary requirements, food allergies or food intolerances.

All items are subject to availability.

All prices are in Philippine Pesos (PHP), inclusive of VAT and are subject to 10% service charge and local taxes.



del Mar





Beer





Pale Pilsen

sen



INTERNATIONAL BEERS

Sapporo, Japan	354
Heineken, Holland	365
Corona, Mexico	360
Weihenstephaner (500ml)	500

LOCAL BEERS

Cerveza Negra	280
San Miguel Premium All-Malt	325
San Miguel Pale Pilsen	245
San Mig Light	245
San Miguel Super Dry	280

DRAUGHT BEER

Weihenstephaner Helles Lager (300ml)	410
Weihenstephaner Helles Lager (500ml)	550
Weihenstephan Hefe Weissbier (300ml)	410
Weihenstephan Hefe Weissbier (500ml)	550
Heineken (250ml)	290
Heineken (500ml)	550
Pilsner Urquell (300ml)	460
Pilsner Urquell (500ml)	600

Allow us to fulfill your needs – please let one of our staff know if you have any special dietary requirements, food allergies or food intolerances.

All items are subject to availability.

All prices are in Philippine Pesos (PHP), inclusive of VAT and are subject to 10% service charge and local taxes.



My Manila Itinerary

- Escotta
- Intramuros
- Binondo
- Malate
- Avenida



Mit L. 3. 127 ab Friedrichshafen
Postkarte
Direktor a. D. Dr. Paul Galowsky
Zentral-Verleger und Verleger K. D. Z.
Erpeditionsstellen
Dresden, N. 1, 21/III. Elbstraße.



Herrn

J. K. Conflic
für Herrn Dr. Galowsky
5. Rue Lavelle



Non-Alcoholic



Mit L. 3. 127 ab Friedrichshafen
Postkarte
Herrn
J. K. Conflic
für Herrn Dr. Galowsky
5. Rue Lavelle
Sofia/Bulgarien.



Mit Luftpost
Par avion

6 7



Prima Manilla

The Man

His Gloria Diaz w
the Universe conf

MOON LANDIN

La Escolla

EBERL
MILIO CIGOL

Solero

A-5255
CINCO VIENTOS

O CIGARILLO

SIGNATURE TEA

Raffles Makati Blend	400
English Breakfast	400
Earl Grey	400
Royal Darjeeling	450
Comptoir de Indes	450
Moroccan Mint	450
Pink Garden	400
Silver Moon	450
Japanese Sencha	450
Genmaicha	450
Lemon Bush	450
Eternal Summer	450
Oolong Prestige	850
1837 White Tea	750
Pai Mu Tan	450

BREWED COFFEE

Regular	230
Decaffeinated	230
Espresso	230
Double Espresso	230
Cappuccino (D)	260
Latte (D)	260
Mocha (D)	270

FRESH JUICE

Orange (L)	350
Mango (L)	350
Pineapple (L)	350
Watermelon (L)	350

STILL WATER

Raffles Still Water		
	350 ml	120
	750 ml	250
Evian		
	330 ml	280
	750 ml	520

SPARKLING WATER

Raffles Sparkling Water		
	350 ml	200
	750 ml	350
San Pellegrino		
	500 ml	300
	750 ml	450
Perrier		
	330 ml	300

SODA

Coke	230
Coke Light	230
Coke Zero	230
Sprite	230
Royal	230
Ginger Beer	350

LEMONADE

Calamansi (L)	300
Mango Ginger (L)	300

(D) dairy • (L) local

Allow us to fulfill your needs – please let one of our staff know if you have any special dietary requirements, food allergies or food intolerances.

All items are subject to availability.

All prices are in Philippine Pesos (PHP), inclusive of VAT and are subject to 10% service charge and local taxes.



MOCKTAILS

STRAWBERRY LYCHEE COOLER 350

Strawberry, lychee, tarragon, lemon, and egg white

BERRY BLUE-PEA FRUIT TEA 350

Green tea infused in rosemary, raspberry, strawberry, lemon, and blue pea

FRAISE CUCUMBER FIZZ 350

Strawberry, cucumber, lemon, mint leaves, basil, and sparkling soda

FRESH ORANGE BASIL FIZZ 350

Fresh orange juice, lemon, mint leaves, basil, and sparkling soda

RAFFLES NUTRITION FOR PLEASURE

WATERMELON BREEZE 280

Watermelon juice, ginger, lemon juice, and mint leaves

CLARITY 340

Orange juice, lemon, lime, mint leaves, and soda water

TURMERIC BOOSTER 600

Turmeric, lemon, and black pepper

SWEET & SOUR 350

Green apple, lime, celery, and cucumbers

Allow us to fulfill your needs – please let one of our staff know if you have any special dietary requirements, food allergies or food intolerances.

All items are subject to availability.

All prices are in Philippine Pesos (PHP), inclusive of VAT and are subject to 10% service charge and local taxes.

fa-
 behind him, son... we are back in that vase...
 yond the city, where the dark fields of the republic
 rolled on under the night.

Gatsby believed in the green light, the orgiastic fu-
 ture that year by year recedes before us. It eluded us
 then, but that's no matter—tomorrow we will run faster,
 stretch out our arms farther. . . . And one fine morn-
 ing—

So we beat on, boats against the current, borne back
 ceaselessly into the past.



LEGEND

Gold Copper Iron Coal

R.R. completed
R.R. partly completed or projected
Lighthouses

C
H
I
N
A

P
H
I
L
I
P
P
I
N
E
S

LATEST ADVERTISEMENTS.

THE TRUTH MUST BE TOLD.

"PROVIDENCE LED ME TO A PLACE
CALLED **RAFFLES HOTEL**, WHERE
THE FOOD IS AS EXCELLENT AS THE ROOMS
ARE GOOD. LET THE TRAVELLER TAKE
NOTE: FEED AT **RAFFLES**
AND SLEEP AT **RAFFLES**."

FROM "SEA TO SEA" BY RUDYARD KIPLING.



References

- Museums Victoria Collections, & Keon-Cohen, C. (1941). *Raffles Hotel*, Singapore. Retrieved from <https://collections.museumsvictoria.com.au/items/1797259>
- Cultivation at Farm. 1960. blogtoexpress.blogspot.com/2012/02/ways-done-in-past-rural-farming.html.
- The Miriam and Ira D. Wallach Division of Art, Prints and Photographs: Picture Collection, The New York Public Library. (1921). *The patient carabau, Philippine Islands* Retrieved from <https://digitalcollections.nypl.org/items/c26315f5-f0f4-8706-e040-e00a1806153e>
- Pedro Murillo Velarde. (1771). *Map of the Philippine Islands* published by Pedro Murillo Velarde in 1774. https://en.wikipedia.org/wiki/File:1774_map_of_the_Philippine_Islands.jpg#filelinks
- Tewell, J. (2008). *Sta. Cruz Church, c1920s, Manila, Philippines*. Flickr. <https://www.flickr.com/photos/johntewell/4278406710/>
- The Miriam and Ira D. Wallach Division of Art, Prints and Photographs: Picture Collection, The New York Public Library. 1911-1921. (n.d.). *Carretela drawn by small horse* [Photograph]. Retrieved from <https://digitalcollections.nypl.org/items/c26315f5-f0f5-8706-e040-e00a1806153e>
- Tewell, J. (2010). *Fort Santiago main gate, Intramuros, Manila, Philippines c1930s*. Flickr. <https://www.flickr.com/photos/johntewell/4873857777/in/photostream/>
- Keon-Cohen, C., & Museums Victoria Collections. (n.d.). *Collyer Quay, Singapore, 1941-1945*. <https://collections.museumsvictoria.com.au/items/1796700>
- Keystone-Mast Collection, UC Riverside, California Museum of Photography. (n.d.). *A Filipino Country Store, Philippines*. Retrieved from <http://www.oac.cdlib.org/ark:/13030/kt2t1nb9mn/?order=2>
- Keystone-Mast Collection, UCR/California Museum of Photography, University of California at Riverside. (1928). *A Little Fishermaid of Cavite*. <http://www.oac.cdlib.org/ark:/13030/kt9w10162w/?order=2>
- Keystone-Mast Collection, UCR/California Museum of Photography, University of California at Riverside. (1929). *Filipino Boys Bathing, The Leap*. Retrieved from <https://oac.cdlib.org/ark:/13030/kt7k4015bz/>
- International View Co., & Library of Congress. (1905). *Where softly sighs of love the light guitar - a Visayan-Filipino serenade*. Retrieved from <https://www.loc.gov/item/93507241>
- Sagaran. (2022). *Sarao Jeepney 1955* [Acrylic on canvas]. *Moving Forward Solo Art Exhibit*.
- Namura, H. (n.d.). *Chocolate Hills*. In *Unsplash*. Retrieved from <https://unsplash.com/photos/MyiYvI-EKis>

References

- American Geographical Society Library, University of Wisconsin-Milwaukee Libraries. (1933). Luzon island (Philippines), loading an automobile onto the SS Mayon. Retrieved from <https://collections.lib.uwm.edu/digital/collection/agsphoto/id/13138/rec/1>
- de Leon, E. (n.d.). First train of pipes for Iloilo new water works. 1920s. In Flickr. Retrieved from <https://www.flickr.com/photos/edlei/21260860025>
- New York State Archives, New York (State). Education Dept. Division of Visual Instruction. Instructional lantern slides, ca. 1856-1939. Series A3045-78, No. B16138. (1932). Philippine Islands. Luzon. Baguio; busy street corner, stores. Retrieved from <https://digitalcollections.archives.nysed.gov/index.php/Detail/objects/1765>
- S. S. Mayon, dollar S. S. Line, Latest Addition To Inter-island Fleet . (n.d.). Retrieved from <https://bobblume.com/philippine-inter-island-travel-via-luxury-ships-1930s/>
- Tewell, J. (n.d.). In Flickr. Retrieved from <https://www.flickr.com/photos/johntewell/3242825738/in/album-72157613206945906/>
- https://www.dailymail.co.uk/travel/travel_news/article-2993296/A-rare-glimpse-colourful-colonial-life-Singapore-s-infamous-Raffles-Hotel-Liz-Taylor-Charlie-Chaplin-stayed.html
- Loading of Hennessy cognac cases on the outskirts of the Charentes. (n.d.). Hennessy – E-mag. <https://www.mixtemagazine.ca/en/epicurean/hennessy-world-reference-for-the-quality-of-cognacs/>
- Tewell, J. (n.d.). A Filipino Wedding. Flickr. <https://www.flickr.com/photos/johntewell/3242832138/in/pool-1159875@N20>
- Ware, J. E. (1899). Four unidentified prominent Filipinos drinking Schlitz beer. Retrieved from <https://criticsrant.com/malolos-congress/>
- The Ford Model TT . (n.d.). Retrieved from <https://www.sutori.com/en/story/history-of-vehicles--c47N6U6EKAhNXodBq42wWtAW>
- Retrieved from <https://m.facebook.com/SanMiguelInternational/photos/1920s-throwback-beer-delivery-trucks-back-in-the-early-daysbeerstories-beer-vint/1304546116256106/>
- The Miriam and Ira D. Wallach Division of Art, Prints and Photographs: Picture Collection, The New York Public Library. (1922). Making embroidery, Philippines. Retrieved from <https://digitalcollections.nypl.org/items/c2624937-b3d4-2318-e040-e00a18067b59>
- The Miriam and Ira D. Wallach Division of Art, Prints and Photographs: Picture Collection, The New York Public Library. (n.d.). Manila, Philippines. Retrieved from <https://digitalcollections.nypl.org/items/510d47e1-17e0-a3d9-e040-e00a18064a99>
- Fitzgerald, F. S. (1925). *The Great Gatsby*. Charles Scribner's Sons.



*Should you wish to purchase
one of our Traveler's Journals,
please let us know and we will be
glad to assist you.*

FACEBOOK

www.facebook.com/RafflesMakati
www.facebook.com/LongBarMakati

INSTAGRAM

[@rafflesmakatihotel](https://www.instagram.com/rafflesmakatihotel)
[@longbarmakati](https://www.instagram.com/longbarmakati)